

**HB | WUXI HONGBA**

**Diversity  
Efficient  
Stability**



*hbactuator.com*



## ABOUT US

### WUXI HONGBA,

10 more years' experience in linear actuator manufacturing and designing. In-house dc motor and leading screw production which brings the lower cost of quality control and production management. CE/ UL/ EMC/ REACH certificated catering for global markets. Highly capable of R&D with a team of 15 engineers to meet the ever-changing customer demand and consuming character.



[hbactuator.com](http://hbactuator.com)





# Industry & Agriculture

## *LINEAR ACTUATOR*

*Cool is the start of the day  
Hundreds of steel toes laced tight  
Machines growl as they turn over  
Radio chatter begins  
Dark clothes show the beginning of darker stains  
One drop falls off your nose as a trickle  
The work sweat of day begins*



[hbactuator.com](http://hbactuator.com)

# LINEAR ACTUATOR



## DJ806



12v or 24v  
Custom stroke  
IP65 Protection  
Max Dynamic Load 1200N  
Min. Installation: Stroke+105mm



## DJ809



12v or 24v  
Custom stroke  
IP65 Protection  
Max Dynamic Load 2500N  
Min. Installation: Stroke+108mm



## DJ850



Electro-hydraulic  
12v or 24v  
Custom stroke  
IP65 Protection  
Max Dynamic Load 8000N  
Min. Installation: Stroke+150mm

# LINEAR ACTUATOR



## DJ805



12v or 24v  
Custom stroke  
IP66 Protection  
Max Dynamic Load 12000N  
Min. Installation: Stroke+200mm



## DJ808



12v or 24v  
Custom stroke  
IP65 Protection  
Max Dynamic Load 7000N  
Min. Installation: Stroke+250mm



## DJ830



12v or 24v  
Custom stroke  
IP65 Protection  
Max Dynamic Load 6000N  
Min. Installation: Stroke+200mm

# Furniture & Medical Care

## *LINEAR ACTUATOR & CONTROLS*

*Home is the place where the laughter should ring  
And man should be found at his best  
Let the cares of the day be as great as they may  
The night has been fashioned for rest  
So leave at the door when the toiling is o'er  
All the burdens of worktime behind  
Lie in bed, raise the head and foot  
Read some fairy tales  
And just be a dad to your girl or your lad*



[hbactor.com](http://hbactor.com)

# LINEAR ACTUATOR



## DJ801



12v or 24v  
Custom stroke  
IP43 Protection  
Max Dynamic Load 6000N  
Min. Installation: Stroke+175mm



## DJ807



12v or 24v  
Custom stroke  
IP43 Protection  
Max Dynamic Load 6000N  
Min. Installation: Stroke+175mm



## DJ810



12v or 24v  
Custom stroke  
IP43 Protection  
Max Dynamic Load 4000N  
Min. Installation: Stroke+145mm

# LINEAR ACTUATOR



## DJ822



12v or 24v  
Custom stroke  
IP54 Protection  
Max Dynamic Load 6000N  
Min. Installation: Stroke+175mm



## DJ823



12v or 24v  
Custom stroke  
IP54 Protection  
Max Dynamic Load 2000N  
Min. Installation: Stroke+150mm



## DJ803



12v or 24v  
Custom stroke  
IP20 Protection  
Max Dynamic Load 1600N  
Min. Installation: 155mm



# LINEAR ACTUATOR



## DJ806



12v or 24v  
Custom stroke  
IP65 Protection  
Max Dynamic Load 1200N  
Min. Installation: Stroke+105mm



## DJ809



12v or 24v  
Custom stroke  
IP66 Protection  
Max Dynamic Load 2500N  
Min. Installation: Stroke+108mm



## DJ825



12v or 24v  
Custom stroke  
IP66 Protection  
Max Dynamic Load 2500N  
Min. Installation: Stroke+115mm

# CONTROL BOX



## **KZ608C**

Wired control  
Input 100 - 240 VAC  
Output 12 or 24 VDC  
Control 1 actuator



## **KZ608W**

Wireless control  
Input 100 - 240 VAC  
Output 12 or 24 VDC  
Control 1-2 actuators



## **KZ615**

Wired or wireless control  
Input 100 - 240 VAC  
Output 12 or 24 VDC  
Control 1-4 actuators



## **KZ616**

Wireless control  
Input 100 - 240 VAC  
Output 12 or 24 VDC  
Control 1-2 actuators

# CONTROL BOX



## **KZ601**

Wired control  
Input 100 - 240 VAC  
Output 12 or 24 VDC  
Control 1-5 actuators



## **KZ614**

Wireless control  
Input 100 - 240 VAC  
Output 12 or 24 VDC  
Control 1-2 actuators



## **KZ608**

Power supply  
Input 100 - 240 VAC  
Output 12 or 24 VDC

# CONTROLS



**SK501**



**SK502**



**SK504**



**SK505**



**SK506**



**SK508**



**SK508U**



**SK509**



# CONTROLS



**SK511**



**SK512**



**SK513U**



**SK516**



**SK517**



**SK518**



**SK519**



**SK521**

# Solar Tracking System

## *LINEAR ACTUATOR*

*A solar tracker is a device that tracks the sun as it moves on its path through the sky, exposing your PV cells to an increased amount of sunlight and hence producing more electricity.*



[hbactuator.com](http://hbactuator.com)

As said by many experts that the amount of solar energy reaching the earth is more than 10000 times the current energy consumption by man. Besides from increasing your return on investment, HB linear actuators can support you with features:

- **Maintenance:** A minimum level of maintenance is an important request. Only simple maintenance measures and more simple checks on regular basis may be requested
- **Power consumption:** Low power consumption demand are always required for a electricity generation plant.
- **Stable performance:** by doing below tests, we can ensure our quality.

1. Noise measurement is accordance with ANSI/ASME PTC-36, measurements of industrial sound.
2. Ingress protection test consist of dust and water tightness tests.
3. UV testing is conducted according to ISO 4892.
4. Corrosion protection testing is conducted according to ISO 9227 over 480 hours.
5. Temperatures tests are in the range of 40°C to +70°C .
6. Static force and lateral deflection have to be tested such that our actuator can handle various force over the course of the day like dead weight, wind force etc.

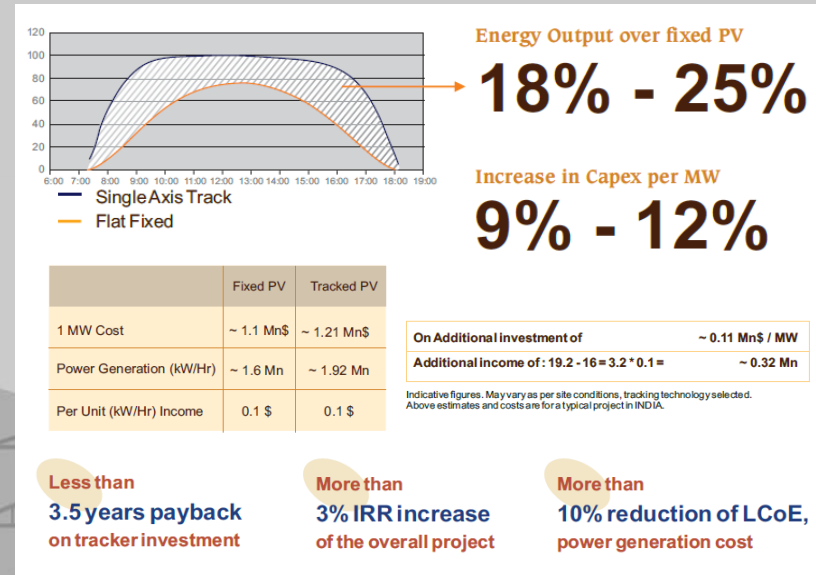
- Increased daily yield
- Accelerated payback
- Reliable performance

- Quality manufacturing
- NA supply chain
- Rapid lead time

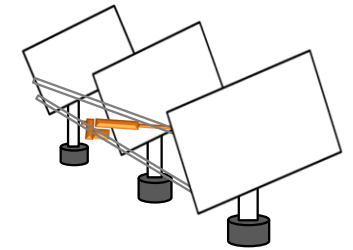
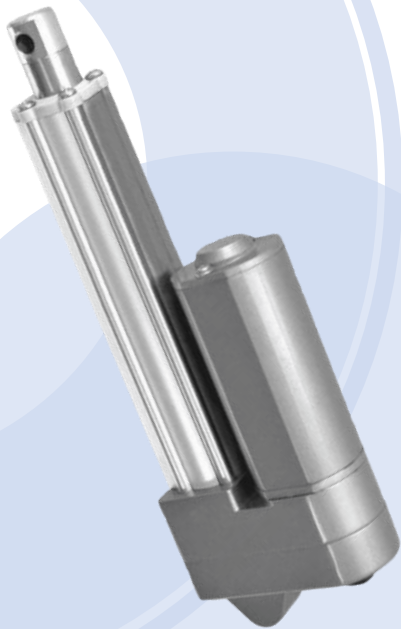
- Designed for high loads and extreme operating temperatures



## Tracker VS Fixed PV



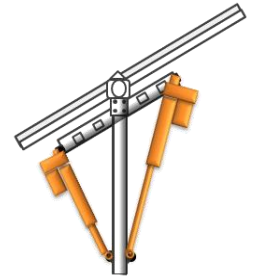
Solar Photovoltaic  
**DJ809**



|                       |   |
|-----------------------|---|
| Motor                 | Brushed DC Motor                        |
| Construction Material | Stainless Steel Piston Rod and Alu Tube |
| Leading Screw         | ACME, 45# Steel                         |
| Stroke Length         | 100 to 600 mm                           |
| Max Dynamic Load      | 2.500 N                                 |
| Max Static Load       | 3.000 N                                 |
| Mounting End          | Trou. Hole $\varnothing 8.2$ or custom  |
| Speed with Free Load  | 5-55 mm/s                               |
| Speed with Full Load  | 4-45 mm/s                               |
| Position Signal       | Hall Sensor or Potentiometer            |
| Resolution            | /                                       |
| Backlash              | /                                       |
| Input Voltage         | 24v dc                                  |
| Rated Current         | $\leq 2.5$ amp                          |
| Working Temperature   | -40 to 65°C                             |
| Weather Resistance    | IP65                                    |
| Lifte time            | 25 years design life                    |

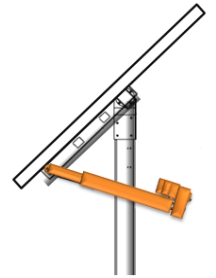


Solar Photovoltaic  
**DJ805**



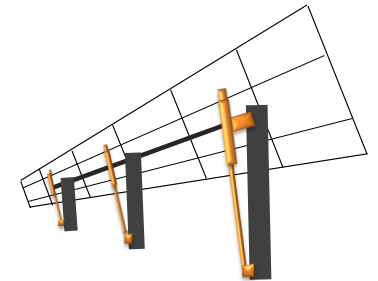
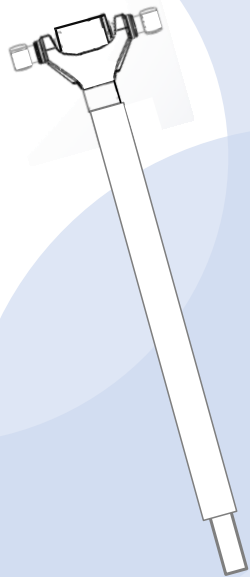
|                       |   |
|-----------------------|---|
| Motor                 | Brushed DC Motor                        |
| Construction Material | Stainless Steel Piston Rod and Alu Tube |
| Leading Screw         | ACME, 45# Steel                         |
| Stroke Length         | 100 to 1.200 mm                         |
| Max Dynamic Load      | 12.000 N                                |
| Max Static Load       | 25.000 N                                |
| Mounting End          | Trou. Hole $\varnothing 8.2$ or custom  |
| Speed with Free Load  | 3.3-38 mm/s                             |
| Speed with Full Load  | 2.7-24 mm/s                             |
| Position Signal       | Hall Sensor                             |
| Resolution            | 5.8 pulse/mm or custom                  |
| Backlash              | $\leq 1$ mm                             |
| Input Voltage         | 24v dc                                  |
| Rated Current         | $\leq 10$ amp at 1.2 ton                |
| Working Temperature   | -40 to 65°C                             |
| Weather Resistance    | IP66                                    |
| Lifte time            | 25 years design life                    |

Solar Photovoltaic  
**DJ828**



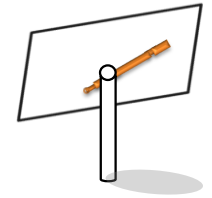
|                       |   |
|-----------------------|---|
| Motor                 | Brushed DC Motor                        |
| Construction Material | Stainless Steel Piston Rod and Alu Tube |
| Leading Screw         | ACME, 45# Steel                         |
| Stroke Length         | 100 to 1.200 mm                         |
| Max Dynamic Load      | 12.000 N                                |
| Max Static Load       | 40.000 N                                |
| Mounting End          | Spherical Bearing                       |
| Speed with Free Load  | 2.2 mm/s                                |
| Speed with Full Load  | 1.7 mm/s                                |
| Position Signal       | Hall Sensor                             |
| Resolution            | 89.085 pulse/mm                         |
| Backlash              | ≤1mm                                    |
| Input Voltage         | 24v dc                                  |
| Rated Current         | ≤5 amp at 1.2 ton                       |
| Working Temperature   | -40 to 65°C                             |
| Weather Resistance    | IP66                                    |
| Lifte time            | 25 years design life                    |

Solar Photovoltaic  
**DJ833**



|                       |                                       |
|-----------------------|---------------------------------------|
| Motor                 | Without Motor or Custom               |
| Construction Material | Carbon Steel or Stainless steel       |
| Leading Screw         | ACME, Carbon Steel or Stainless steel |
| Stroke Length         | 100 to 1.200 mm                       |
| Max Dynamic Load      | 15.000 N                              |
| Max Static Load       | 50.000 N                              |
| Mounting End          | Throu. Hole or Spherical Bearing      |
| Speed with Free Load  | 1.5 mm/s                              |
| Speed with Full Load  | 0.5 mm/s                              |
| Position Signal       | /                                     |
| Resolution            | /                                     |
| Backlash              | ≤1mm                                  |
| Input Voltage         | 24v dc                                |
| Rated Current         | ≤10 amp at 1.5 ton                    |
| Working Temperature   | -40 to 65°C                           |
| Weather Resistance    | IP65                                  |
| Lifte time            | 25 years design life                  |

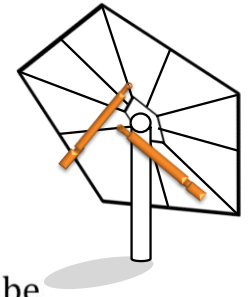
Solar Thermal  
**DJ816**



|                       |   |
|-----------------------|---|
| Motor                 | Stepper Motor                           |
| Construction Material | Stainless Steel Piston Rod and Alu Tube |
| Leading Screw         | ACME or Ball, Alloy Steel               |
| Stroke Length         | 100 to 700 mm                           |
| Max Dynamic Load      | 4.000 N                                 |
| Max Static Load       | 10.000 N                                |
| Mounting End          | Spherical Bearing                       |
| Speed with Free Load  | 4 mm/s                                  |
| Speed with Full Load  | 1.2 mm/s                                |
| Position Signal       | Encoder                                 |
| Resolution            | 378.9 pulse/mm                          |
| Backlash              | ≤0.25mm                                 |
| Input Voltage         | 24v dc                                  |
| Rated Current         | ≤2 amp at 1.5 ton                       |
| Working Temperature   | -40 to 65°C                             |
| Weather Resistance    | IP65                                    |
| Lifte time            | 25 years design life                    |



Solar Thermal  
**DJ865**



|                       |   |
|-----------------------|---|
| Motor                 | Stepper Motor                           |
| Construction Material | Stainless Steel Piston Rod and Alu Tube |
| Leading Screw         | ACME or Ball, Alloy Steel               |
| Stroke Length         | 100 to 700 mm                           |
| Max Dynamic Load      | 4.000 N                                 |
| Max Static Load       | 10.000 N                                |
| Mounting End          | Spherical Bearing                       |
| Speed with Free Load  | 4 mm/s                                  |
| Speed with Full Load  | 1.2 mm/s                                |
| Position Signal       | Encoder                                 |
| Resolution            | 378.9 pulse/mm                          |
| Backlash              | ≤1mm                                    |
| Input Voltage         | 24v dc                                  |
| Rated Current         | ≤2 amp at 1.5 ton                       |
| Working Temperature   | -40 to 65°C                             |
| Weather Resistance    | IP65                                    |
| Lifte time            | 25 years design life                    |



Virtual Factory Tour

# WUXI HONGBA

5 Lijiang Rd.  
Xinwu District, Wuxi City  
Jiangsu Province China 214028



**INDUSTRY & AGRICULTURE**



**SOLAR TRACKING SYSTEM**



**FURNITURE & MEDICAL CARE**

For more information, please visit our website.

**[hbactuator.com](http://hbactuator.com)**